

Reva and David Logan Center for the Arts | Chicago, IL

Lighting Proposal Memo

Sean Kim

Faculty Advisor: Dr. Houser

9/9/2013

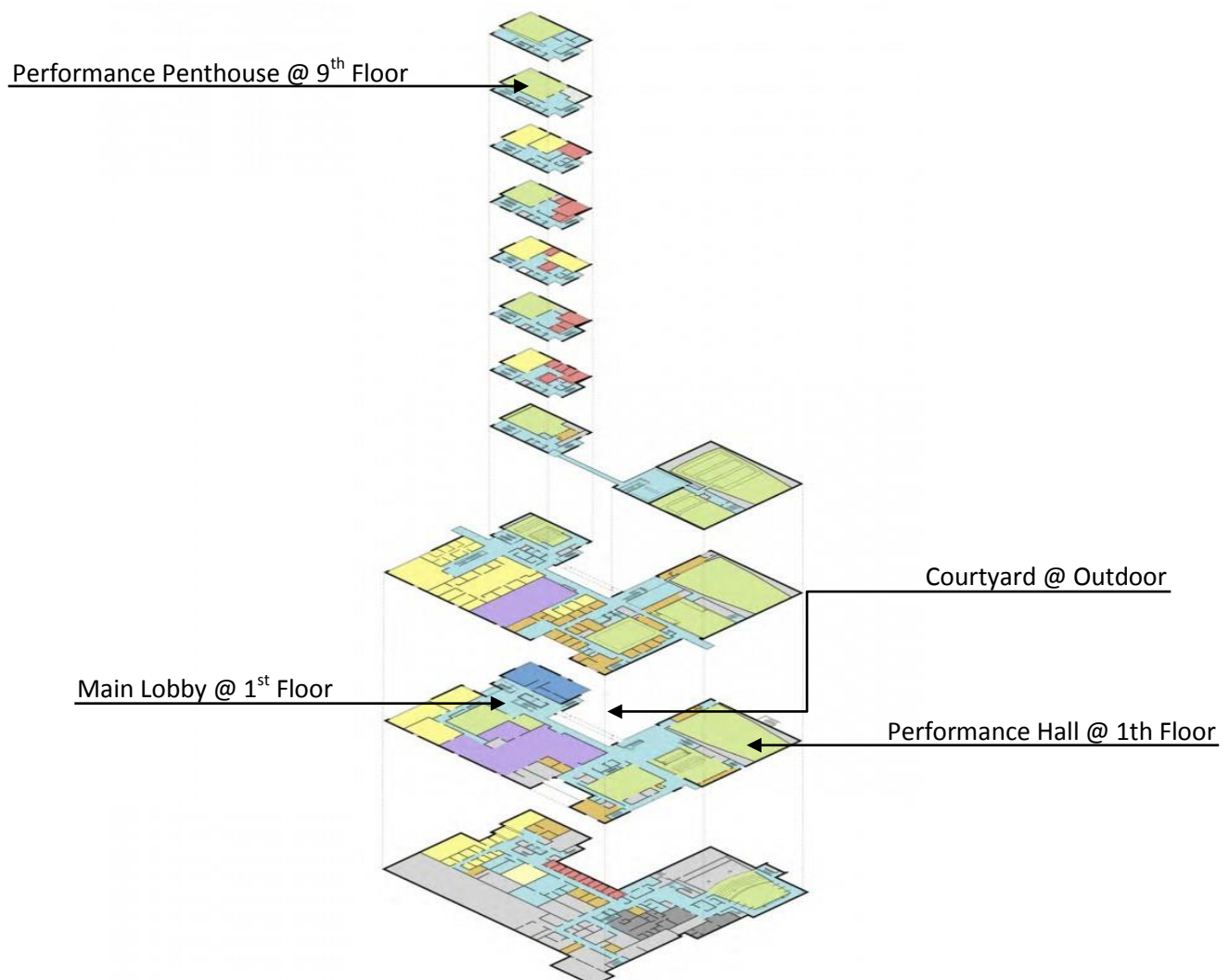


Introduction

The lighting proposal memo describes about four spaces to study for the lighting portion of Senior Thesis. Each space would be described with drawings, space dimensions, materials, and a list of activities and/or visual tasks. The proposed spaces are listed as follow:

- Large work space: Performance Hall
- Special purpose space: Performance Penthouse
- Circulation space: Main Lobby
- Outdoor space: Courtyard

The Performance Hall will be analyzed to produce three different design concepts, and the Main Lobby will produce a lighting solution that provides psychological impression.

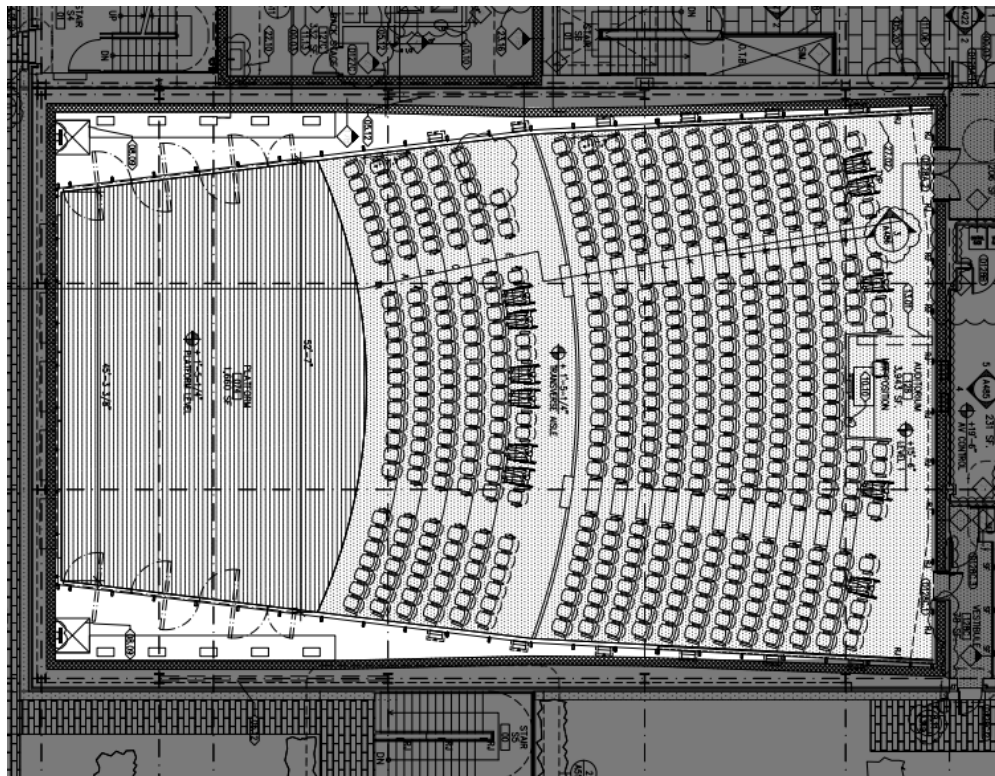


Performance Hall

The space of performance hall, located on the first floor, is a largest theater with a 474-seat. This space is used primarily for concert, performance, and full orchestra. With drop-down shades along the perimeter of the ceiling, it also allows the acoustics to be altered for music, dance or film. For various activities and applications of the theater, three different lighting design concepts will be developed.



- Area = 3,943 SF for seating area, with 1,660 SF for stage area.
- Dimension = W 64' (backward), W 45' - 3 3/8' (forward)
L 102' - 6"
H 21' - 6" (lowest), H 35" (highest)
- Materials = Cherry veneer woods panel clad, Acoustical ceiling tile, PDT. Gypsum wall board, Rubber base, Fabric wrapped panel, Painted plywood.

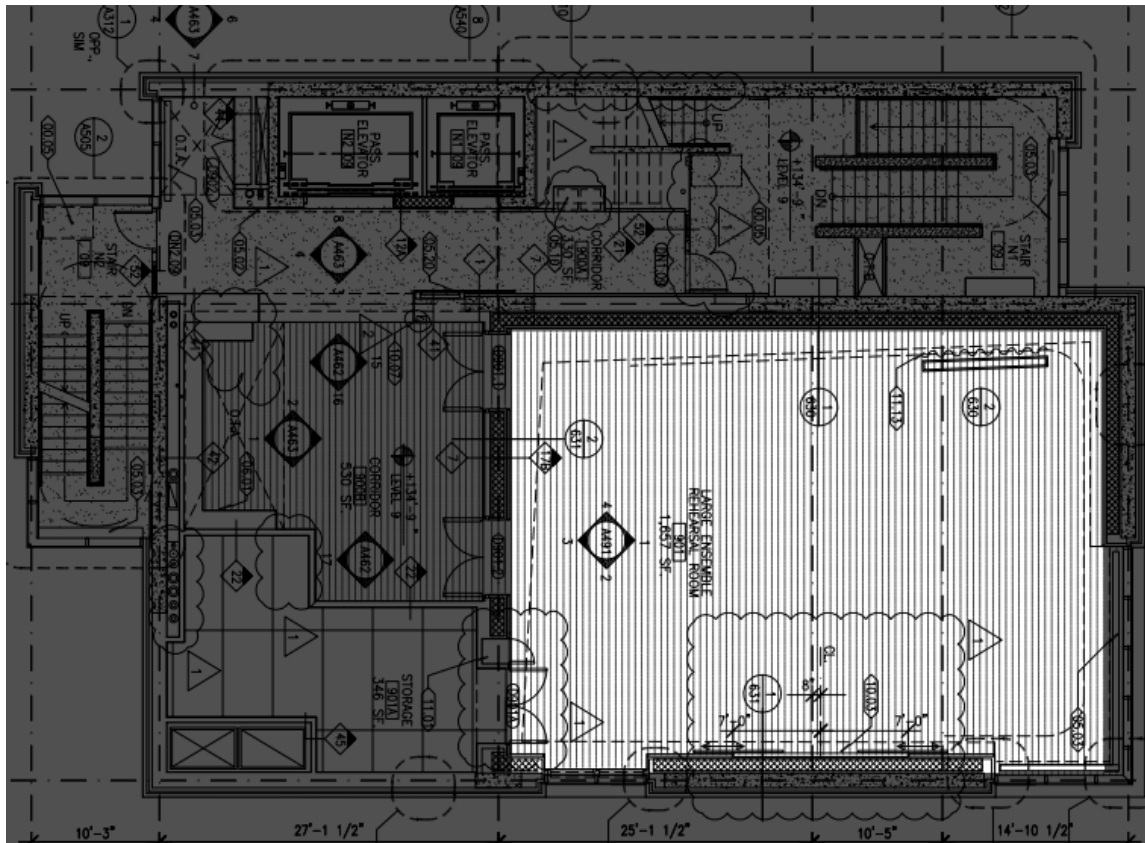


Performance Penthouse

The Performance Penthouse is located on the ninth floor of the tower. This space houses performances, dance, class, seminars and banquets, with reconfigurable seating for up to 100 people. The full-height windows are located on the North-East, and allow daylight into the space with offering spectacular views along a vista. This space will be analyzed for daylight study and control system integration.



- Area: 1,657 SF
- Dimension: W 34' x L 47' x H 30'
- Materials: Perforated wood panel clad wall, Solid wood batten panels with Type 4 fabric wrapped fiberglass panels behind, Glazed aluminum curtain wall, Marker Board Strip wood finish, Acoustical perforated painted Metal panels

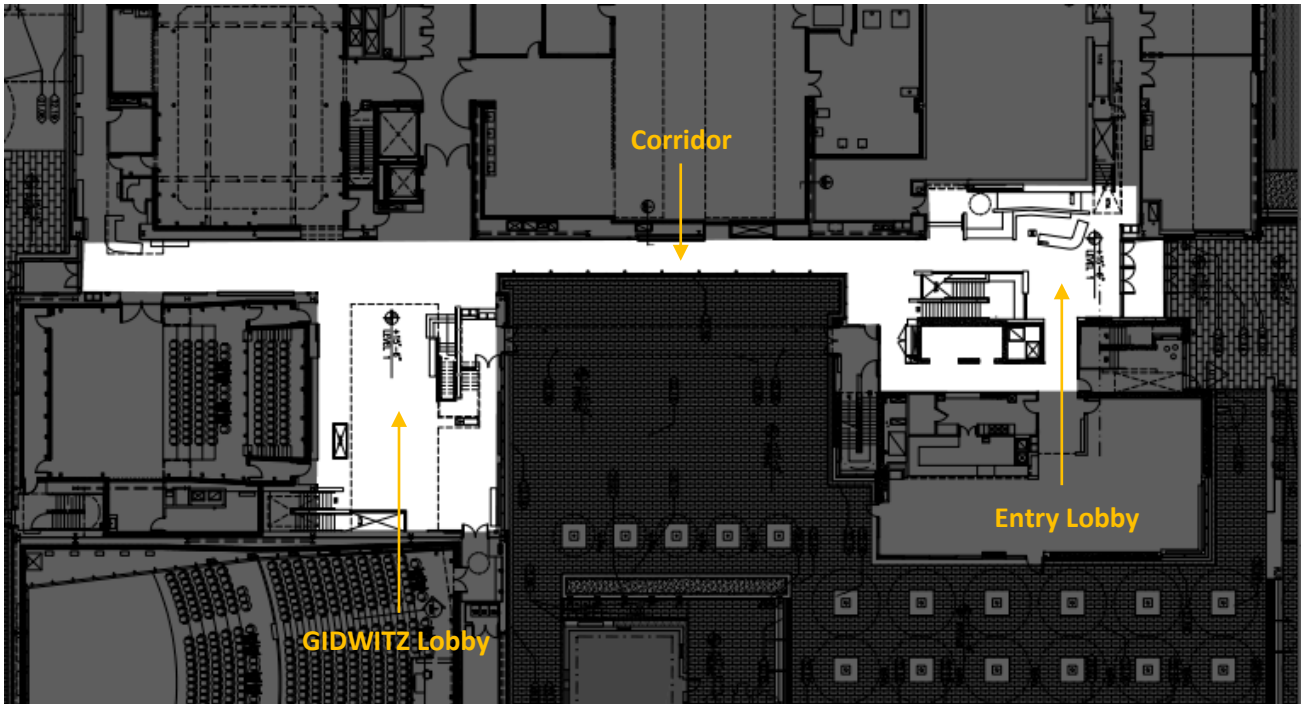


Main Lobby

The main lobby is primary access to the building. The stair near the entrance, allows the people to the tower directly. Also, it is connected to the *GIDWITZ Lobby* where is the daylight feature space with a stairway leading up to terraces both indoor and outdoor audience overflow. The corridor on the lobby is used for gallery, and exhibition. The public psychological impression will be applied to the lobby.



- Area: Approx. 7400 SF
- Dimension: Entry Lobby: Approx. W 37' x L 77' x H 10' AFF
Corridor: Approx. W 8' x L 180' x H 10' AFF
GIDWITZ Lobby: Approx. W 58' x L 42' x H 20' – 0 3/4" AFF
- Materials: Painted metal wall panel, PTD. Gypsum wall board, SS wall panel, 18" x 36" stone type 1, 6" metal base, Glass curtain wall, Acoustical ceramic tile type1 Felt wall carpeting, Flush wood wall panel, Glazed aluminum curtain wall.



Courtyard

The Courtyard is placed at outdoor, and surrounded by Logan Center building, and Midway Studio building. It allows people to access to tower and performance hall directly. This space is provided as a rest area and café for the students; and used for class, exhibition, and outdoor performance sometimes.



- Area: Approx. 10,700 SF
- Dimension: Approx. W 60'(widest) x L 144' (Longest)
- Materials: Concrete Unit Paver Type 1
 2 7/8" x 23 1/2" x 4" Thick
 ALT: Granite Stone Paver
 3" x 24" x 4" Thick

